

S2 Series

1.3MP High-end Industrial Barcode Scanner



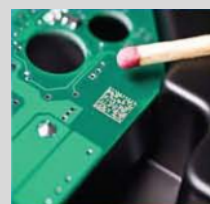
Product Description

S2 is a handheld industrial bar code scanner designed for direct part identification (DPM) application scenarios. Equipped with intelligent light switch function, according to different state bar code to be solved automatically adjust the type of light source . Through configuration tools, the scanner can be set to a variety of functions, laser etching, ink jet printing, firing pin point engraving, heat transfer printing and other forms of bar code has a strong decoding capacity.

Product Features

- Using 1280 * 800 high resolution, high frame rate image sensor, can quickly identify more precision bar code;
- In line with the ergonomic design, comfortable operation, long-time work is not easy to fatigue, in line with the industrial environment of the product design, more durable;
- Intelligent light source switch, active memory and intelligent switch of the best decoding light source;
- Intelligent debugging mode, intelligent for radium carving, dot and other direct element marking (DPM) barcode scanning setting, to provide the best decoding setting for fixed application scenarios;
- Diverse communication interface, can quickly change the data cable, plug and play is more convenient to use.

Identify Multiple Codes



Hand-held industrial bar code scanner

Application Scenarios



Product parameters				
scan function	pixel	1280 Pixels(H) x 1024 Pixels(V)		
	lighting	White complement light		
	focusing	S2-1 green bar; S2-2 red bar		
	Reading mode	Manual trigger; auto sense		
	Symbologies	1D	UPC A , UPC E , EAN 8 , EAN 13 , Code 128 , Code 39 , Code 93 Code 32 , Code11 , Codabar ,Plessey , MSI , Interleaved 2 of 5 , IATA 2 of 5 , Matrix 2 of 5 , Straight 2 of 5 , Pharmacode , RSS-14 , RSS-14 Expanded , RSS-14 Limited Composite Code-A , Composite Code-B , Composite Code-C	
		2D	Data Matrix , QR Code , Micro QR , PDF 417 , Micro PDF 417 , Aztec, Maxicode	
	Read accuracy	1D : ≥3 mil ; 2D : ≥5 mil		
	Typical reading depth	product model	S2-1	S2-2
		Code 39 (3mil)	55mm~150mm	40mm~70mm
		Code 39 (5mil)	45mm~250mm	30mm~100mm
Data Matrix (5mil)		40mm~60mm	40mm~70mm	
100%UPCA (13mil)	40mm~500mm	30mm~100mm		
Field of view Angle	Horizontal 41° (H), vertical 35° (V);			
Print contrast	≥20%(UPC/EAN 100% , PCS 90%)			
size	Appearance size	181x 102 x 77 mm		
electrical parameter	weight	About 150g (excluding cable)		
	communication interface	USB , RS-232 , Virtual COM Port wireless		
	Cable	Straighten 2 meters, can be removed quickly		
	Notification	Buzzer, LED indicator light, vibration motor		
	working voltage	DC 5V±5%		
	working current	300 mA ± 5% (typical), 400 mA ± 5% (maximum)		
	Standby current	100 mA ±5%		
enviromental parameter	working temperature	-20°C~+50°C		
	Storage temperature	-40°C~+70°C		
	relative humidity	5%~95% (No-condensation)		
	electrostatic protection	± 12 kV (air discharge), ± 8 kV (direct discharge)		
	Fall height	1.8 Meters		
	levels of protection	IP65		
international attestation	FCC Part15 Class B , CE , EMC Class B			

Contact Information



Shenzhen Rakinda Technologies Co., Ltd.

Tel: +86 18145816425

Email: contact@rakinda.com

WhatsApp: +8618145816425

Website:www.rakinda.com

Skype: Scanmax Rakinda

WeChat:+8618145816425

Add: 5F Bldg .A2.Lilang Software Park, No,31 Bulan Rd,
Longgang Dist,Shenzhen City,Guangdong Province, China